

A scenic photograph of two Škoda Superb cars parked on a paved waterfront promenade. On the left is a silver sedan, and on the right is a light green station wagon. In the background, a river flows between modern, colorful apartment buildings under a bright, cloudy sky. The sun is low on the horizon, creating a warm glow and lens flare effects. The entire image is framed by dark green diagonal borders on the top-left and bottom-right corners.

Škoda Superb

Product Guide

September 2025

SKODA

Superb Range



Model Code	Model Description	Fuel	Transmission	Gears	CO2 Emissions (g/km)	Fuel Consumption (l/100km)	Annual Road Tax From	Selection From	Selection + From	Sportline From	L&K From
NZ3_DD	1.5TSI 150hp DSG mHEV	Petrol	DSG (Auto)	7-speed	116 - 123	5.1 - 5.4					
NZ3_4D	2.0TDI 150hp DSG	Diesel/HVO	DSG (Auto)	7-speed	128 - 135	4.9 - 5.1					

Please note, due to optional additions there is the potential that vehicles may enter higher or lower vrt bands, thus affecting the retail price of the car, additionally there may be models with run-out stock from a previous model year shown. Please see the final slide for all relevant models.

Superb Combi Range



Model Code	Model Description	Fuel	Transmission	Gears	CO2 Emissions (g/km)	Fuel Consumption (l/100km)	Annual Road Tax From	Selection From	Selection + From	Sportline From	L&K From
NZ5_DD	1.5TSI 150hp DSG mHEV	Petrol	DSG (Auto)	7-speed	119 - 126	5.2 - 5.5					
NZ5_4D	2.0TDI 150hp DSG	Diesel/HVO	DSG (Auto)	7-speed	131 - 138	5.0 - 5.3					
NZ5_YC	1.5TSI 204hp DSG PHEV	Petrol/Electric	DSG (Auto)	6-speed	28 - 32	1.2 - 1.4					

"Recommended Retail Prices & Annual Road Tax are calculated using the base model WLTP values and are subject to change as a result of your vehicle configuration. Škoda Ireland reserves the right to alter pricing and specification without notice. Delivery & Related Charges Extra - please contact your local Škoda dealer for more information. Škoda Ireland has made every effort to ensure the accuracy of information but does not accept liability for any errors or omissions. The specified fuel consumption and emission values were presented, are the official figures unless stated otherwise and are obtained in accordance with Worldwide Harmonized Light Vehicle Test Procedure (WLTP) and are correct at the time of publication. WLTP values reflect the worldwide standard vehicle range excluding additional equipment such as optional extras and accessories which may have an effect on the fuel consumption (l/100km) and CO₂ emissions produced. Please note WLTP values for vehicle range and consumption may not be realised in real or day to day driving conditions"

SKODA

Selection: Key Equipment

SAFETY

Hill hold control

Driver & front passenger front, side & curtain airbags incl. passenger airbag deactivation

Driver knee airbag

Seatbelt warning system

Electronic stability control (ESC)

iSOFIX child seat anchor points (1x front x2 rear)

Tyre pressure monitoring system (TPMS)

Emergency call (eCall)

Traffic sign recognition

Safety assist systems:

- Front assist
- Side assist
- Lane assist
- Turn assist
- Rear cross assist
- Emergency assist
- Intelligent speed assist
- Multi collision brake assist



FUNCTIONAL

Adaptive cruise control

'Kessy Full' – Keyless start/stop system incl. anti-theft alarm & walkaway locking function

Infotainment system incl. 10.4" touchscreen display, Bluetooth & 9 speakers

Wireless Smartlink (Apple Carplay & Android auto)

Wireless charging pad (subject to device compatibility)

Climatronic 3-zone air conditioning

USB-C charging points – 2x front/2x rear/1x mirror

Digital smart dials

Front & rear parking sensors

Rear view camera

Virtual pedal – electric tailgate incl. motion sensor

Electrically operated boot cover (combi only)

Trailer hitch preparation

Front & rear electric windows

Auto-dimming rear view mirror

10.25" digital driver dashboard display

Spare 3rd key

Remote access (3 year subscription) (YOK)

INTERIOR

Black/grey 'Loft' fabric interior

Heated front seats

Front & rear centre armrest incl. storage area

Split folding rear seat & mechanical seat release

2 spoke leather multi function steering wheel with tiptronic paddles

Front & rear footwell lighting

Aluminium door sills

Net program in boot compartment

EXTERIOR

17" Alrakis silver alloy wheels

Spare wheel, tool kit & jack

LED headlights incl. LED daytime running lights

LED tail lights

Heated & electric exterior mirrors

Rear window wiper (saloon only)

'SUNSET' dark tinted privacy glass

Chrome pack:

- Chrome window surround
- Unique dark chrome front grille inserts
- Anodized chrome roof rails (Combi)



SKODA

Selection +: Key Equipment

Created with those in mind who appreciate maximum comfort and practicality, the Selection + adds to the already comprehensive specification of the Selection with an emphasis on Interior feel. Key equipment includes: (in addition to Selection)

Suite Design Selection:

- Leather upholstery (black or cognac)
- Ergonomically certified front seats
- Advanced massage functionality
- Electrically operated front seats
- Seat memory functionality
- Heated & ventilated front seats
- Interior ambient lighting
- 18" Dofida silver alloy wheels



SKODA

Sportline: Key Equipment

With sharp, sleek details both inside and out, the Sportline is distinctive from every angle. Packed with exclusive styling, the Sportline will ensure you can indulge your thirst for adventure in total comfort. Key equipment includes (in addition to Selection spec):

19" Torcular black alloy wheels

Matrix LED headlights

LED tail lights incl. dynamic indicators

Electrically operated front seats with memory functionality

Advanced massage functionality

Interior ambient lighting

Drive mode select

Sportline interior styling pack:

- Black Suedia upholstery incl. front sports seats
- Dark interior headliner
- Leather sports steering wheel (incl. DSG paddles)
- Front & rear floor mats
- Aluminium sports pedals
- Carbon / Black decorative inserts

Sportline exterior styling pack:

- Front & rear sports bumpers
 - Black gloss exterior mirrors
 - Black gloss front grille surround
 - Black rear spoiler (limo only)
 - Black roof rails (combi only)
-



L&K: Key Equipment

The L&K mixes the sharp aesthetics of the Superb with elegant styling, a sports chassis and a combination of luxury extras. A celebration of class, the Superb L&K is designed to give an unparalleled driving experience. Key equipment includes: (in addition to Selection +)

19" Veritate anthracite alloy wheels

Matrix LED headlights

LED tail lights incl. dynamic indicators

13 "Infotainment system:

- 13" Display
- Navigation
- Display cleaner
- Remote access + Infotainment Online (3-year subscription)

L&K interior styling pack:

- Leather upholstery (black or cognac) with L&K stitching
- Ergonomic electric front seats with advanced massage functionality
- Electrically operated front seats, heated & ventilated

L&K exterior styling pack:

- L&K chrome side moulding
- L&K specific badging
- Acoustic front and rear side windows
- 'SUNSET' dark tinted privacy glass

Dynamic chassis control

Drive mode select

Front & rear heated seats

Canton sound system: 12 speaker audio system incl. subwoofer



SKODA

Superb: Wheels



17" Alrakis alloy wheels
(Code U68)



18" Dofida alloy wheels
(Code 411)



19" Aniara alloy wheels
(Code PJ5)



19" Torcular alloy wheels
(Code 49K)



19" Veritate polished anthracite alloy wheels
(Code C5S)



19" Veritate Silver alloy wheels
(Code PJ7)

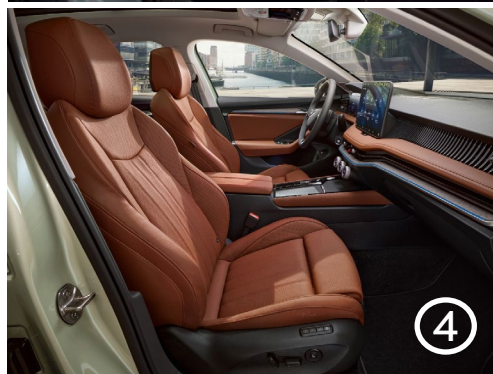
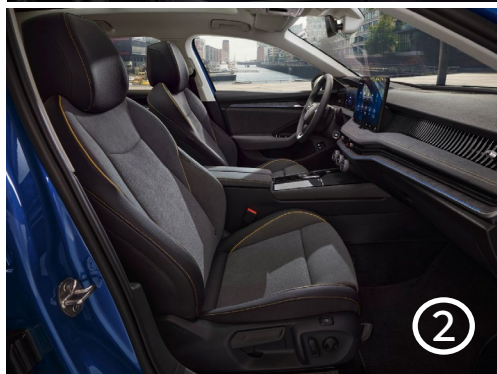
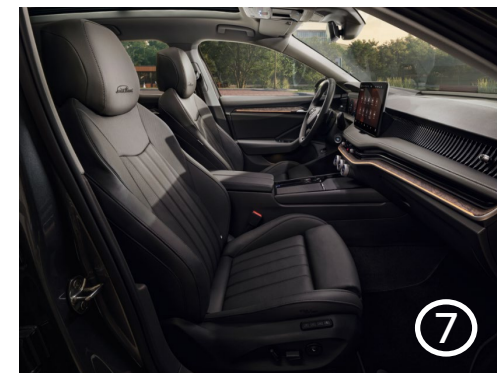
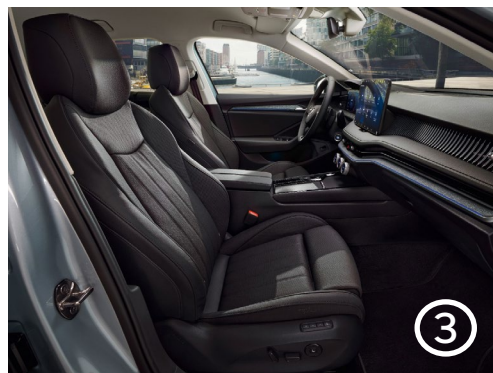
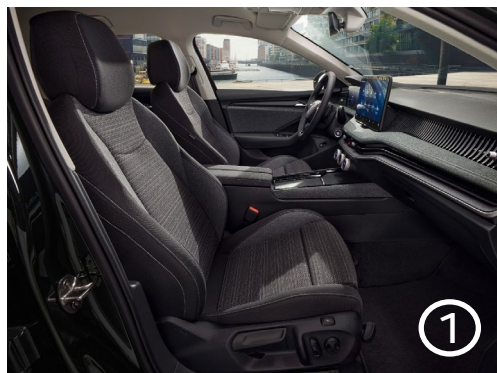
CODE	DESCRIPTION	Selection	Selection +	Sportline	L&K
U68	17" Alrakis aero alloy wheels	STANDARD	---	---	---
411	18" Dofida silver aero alloy wheels	---	STANDARD	---	---
49K	19" Torcular alloy wheels	---	---	STANDARD	---
PJ5	19" Aniara aero alloy wheels	---	€860	€0	---
C5S	19" Veritate polished anthracite alloy wheels	---	---	---	STANDARD
PJ7	19" Veritate silver alloy wheels	---	---	---	€0

SKODA

Option prices quoted are for reference only and are subject to change depending on VRT band applicable – please contact your local Škoda dealer for more information.

Superb: Design Selections – Upholstery and Decorative trim

IMAGE	DESIGN	CODE	LINKED OPTIONS	UPHOLSTERY	DASHBOARD	DOOR LINING	ROOF LINER
1	Loft	HS	---	Black and grey fabric with grey stitching	Black – grey fabric	Black – grey fabric	Grey
2	Lounge	HT	PI2	Grey Suedia with yellow stitching	Grey Suedia	Grey Suedia	Grey
3	Suite Black	TK	---	Black leather & leatherette with black/grey stitching	Black leather & leatherette	Black leatherette	Grey
4	Suite Cognac	TL	PI4	Cognac leather & leatherette with cognac stitching	Cognac leather & leatherette	Cognac leatherette	Grey
5	Sportline	EA	---	Black Suedia & leatherette with white stitching	Black Suedia	Black Suedia	Black
6	Sportline Suite	GN	PI6	Black leather & leatherette with white stitching	Black leatherette	Black leatherette	Black
7	L&K Suite Black	TM	---	Black leather & leatherette with black/grey stitching	Black leather & leatherette	Black leatherette	Grey
8	L&K Suite Cognac	TN	PI5	Cognac leather & leatherette with cognac stitching	Cognac leather & leatherette	Cognac leatherette	Grey



Please note, images are used for illustrative purposes only

Superb: Design Selections

INTERIOR CODE	LINKED OPTIONS	DESIGN SELECTION	Selection	Selection +	Sportline	L&K
HS	---	Loft Design selection	STANDARD	---	---	---
HT	PI2	Lounge Design selection	€2,975	---	---	---
TK	PI3	Suite Black Design selection	---	STANDARD	---	---
TL	PI4	Suite Cognac Design selection	---	€0	---	---
EA	---	Sportline	---	---	STANDARD	---
GN	PI6	Sportline Suite	---	---	€1,135	---
TM	---	L&K Black Design selection	---	---	---	STANDARD
TN	PI5	L&K Cognac Design selection	---	---	---	€0

Superb: Optional Extras

PACKAGES		Selection	Selection +	Sportline	L&K
PW0	Climate pack: <ul style="list-style-type: none"> • Front & rear heated seats • Heated 2-spoke steering wheel incl. Tiptronic paddles • Heated windshield 	€700	€700	---	STANDARD
PW1	Climate pack: <ul style="list-style-type: none"> • Front & rear heated seats • Leather sports heated steering wheel incl. tiptronic paddles • Heated windshield 	---	---	€725	---
PF0	Family pack: <ul style="list-style-type: none"> • Rear side airbag • Rear adjustable head rests incl. sleep aid functionality • Tablet holder in rear • Roller blinds for rear door windows 	€785	€785	€785	€785
PL0	Light and View pack: <ul style="list-style-type: none"> • Matrix LED headlights incl. variable light distribution • LED tail lights incl. dynamic indicators 	€2,420	€2,420	STANDARD	STANDARD
RN0	Infotainment pack: (requires YOZ) <ul style="list-style-type: none"> • 13" Display • Navigation • Display cleaner • Remote access + Infotainment Online (3-year) 	€1,350	€1,350	€1,350	STANDARD
RN1	Infotainment pack plus: (requires YOZ) <ul style="list-style-type: none"> • 13" Display • Navigation • Display cleaner • Head up display (HUD) • Remote access + Infotainment Online (3-year) 	€1,965	€1,965	€1,965	€835
PR4	Assisted drive pack: <ul style="list-style-type: none"> • 360-degree camera • Remote park assist • Trained park assist 	---	---	€1,140	€1,140

Option prices quoted are for reference only and are subject to change depending on VRT band applicable – please contact your local Škoda dealer for more information.

SKODA

Superb: Optional Extras

SINGLE OPTIONS		Selection	Selection +	Sportline	L&K
3FU	Panoramic Sunroof (combi only)	€1,545	€1,545	€1,545	€1,555
PD1/PD3	Dynamic chassis control	---	---	€1,145	STANDARD
9VS	Canton sound system	---	---	€925	STANDARD
YOZ	Remote Access + Infotainment Online (3 year subscription) (requires RN0/RN1)	€0	€0	€0	STANDARD
EA9	Extended warranty (5 year / max. 150,000km)	€1,000	€1,000	€1,000	€1,000

Option prices quoted are for reference only and are subject to change depending on VRT band applicable – please contact your local Škoda dealer for more information.

Superb: Exterior Colours



Energy Blue (K4K4 – Solid)



Purity White (0Q0Q – Solid)



Graphite Grey (5X5X – Metallic)



Pebble Silver (F0F0 – Metallic)



Ebony Black (0E0E – Metallic)



Cobalt Blue (0A0A – Metallic)



Carmine Red (W0W0 – Metallic)



Ice Tea Yellow (S3S3 – Metallic)

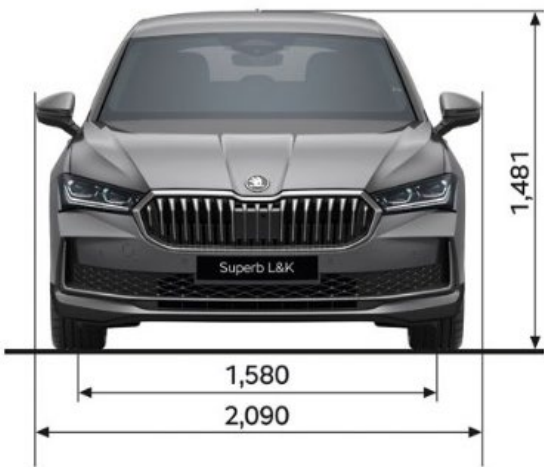
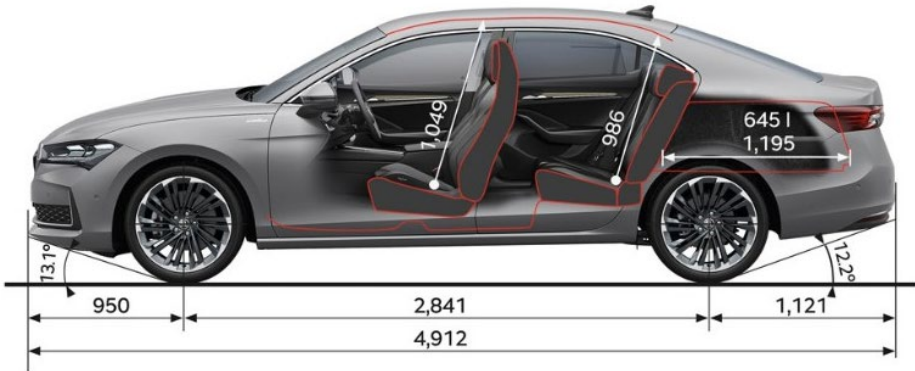
DESCRIPTION	Selection	Selection +	Sportline	L&K
Solid: Energy Blue	€0	€0	€0	€0
Solid: Purity White	€605	€605	€605	€610
Metallic	€925	€925	€925	€925

Option prices quoted are for reference only and are subject to change depending on VRT band applicable. All the colour images on this page are matched as accurately as possible to the actual paint colours used. However, due to print processes, Škoda Ireland cannot guarantee that colours shown are 100% accurate. Please contact your local Škoda dealer for more information.

SKODA

Superb Saloon: Technical Data

	1.5TSI 150hp DSG mHEV	2.0TDI 150hp DSG
Fuel Type	Petrol	Diesel
Cylinders / Displacement (cc)	4 / 1498	4 / 1968
Max. Power: kW	110	110
Max. Torque: Nm	250	360
Transmission	DSG (Auto)	DSG (Auto)
Gears	7-speed	7-speed
Traction System	Front wheel drive	Front wheel drive
Length (mm)	4912	4912
Width (mm)	1849	1849
Height (mm)	1511	1511
Wheelbase (mm)	2837	2837
Luggage Capacity (litres)	645	645
Top Speed (km/h)	225	225
0 – 100 km/h (seconds)	9.2	9.2
Turning Circle (m)	11.1	11.1
WLTP Fuel Consumption (litres/100km)	5.2 - 5.5	4.9 – 5.1
WLTP Emissions Combined (CO2 g/km)	118 - 124	128 - 134
Gross Vehicle Weight (kg)	2084	2210
Max. Towing Capacity - Braked (kg) at 12 %	1600	2000
Fuel Tank (litres)	66	66



SKODA

Superb Combi: Technical Data

	1.5TSI 150hp DSG mHEV	2.0TDI 150hp DSG	1.5TSI 204hp DSG IV
Fuel Type	Petrol	Diesel	Petrol/Electric
Cylinders / Displacement (cc)	4 / 1498	4 / 1968	4 / 1498
Max. Power: kW	110	110	Electric motor: 110 PHEV motor: 40
Max. Torque: Nm	250	360	250
Transmission	DSG (Auto)	DSG (Auto)	DSG (Auto)
Gears	7-speed	7-speed	6-speed
Traction System	Front wheel drive	Front wheel drive	Front wheel drive
Length (mm)	4902	4902	4902
Width (mm)	1849	1849	1849
Height (mm)	1521	1521	1521
Wheelbase (mm)	2837	2837	2839
Luggage Capacity (litres)	690	690	510
Top Speed (km/h)	222	222	220
0 – 100 km/h (seconds)	9.3	9.3	8.1
Turning Circle (m)	11.1	11.1	11.1
WLTP Fuel Consumption (litres/100km)	5.3 – 5.6	4.9 – 5.2	0.3 – 0.4
Range WLTP (km)	---	---	125 – 134
WLTP Emissions Combined (CO2 g/km)	120 – 128	130 - 137	7 - 8
Gross Vehicle Weight (kg)	2,121	2,240	2,350
Max. Towing Capacity - Braked (kg) at 12 %	1600	2000	1800
Fuel Tank (litres)	66	66	45



Battery & Charging

The new Superb iV is well suited not only for home charging, but also for charging at public chargers. Plus, the battery is continuously charged by regenerative braking because it processes the kinetic energy generated when braking. Fitted with a 25kWh Lithium-ion battery which provides a WLTP range of over 100km.

Charging times (approximate data):

Source	Charging power	SoC	Charging time
DC	40 kW*	10–80%	25 min.
AC	11 kW**	0–100%	2 h 30 min.
	2.3 kW***	0–100%	11 h 15 min.




* Maximum DC charging power is dependent upon various charging conditions and may vary as a result.

** Typically, a public charger or home wallbox with three-phase 16 A.

*** Typically charging from a household socket with one-phase 10 A.



Charging cables compatible with the Superb iV:

	Mode 3	From charging from a wallbox	standard
	Wallbox cable (Type 2)	The cable is part of the AC charging station	–
	Mode 4 (CCS2 connector)	The cable is part of the DC charging station	–

HVO (Hydrotreated Vegetable Oil)

Fuel your new diesel Škoda with HVO and reduce emissions by up to 90%

What is HVO?

HVO is a fuel replacement or alternative for compatible diesel engines. HVO offers a cleaner way to fuel by providing up to 90% reduced CO2 emissions. Unlike first generation biofuels, which are made from crops such as rapeseed and soy, Hydrotreated Vegetable Oil (HVO) is a second-generation biofuel made from pre-existing bio-waste products, primarily used cooking and vegetable oil from food industry waste. Manufactured from renewable and sustainable waste, HVO is a paraffinic drop-in fuel designed as a direct replacement for diesel. It meets the international fuel standard EN 15940. HVO can provide full lifecycle greenhouse gas (GHG) emission savings of up to 90% when compared to conventional diesel fuel.



What are the benefits?

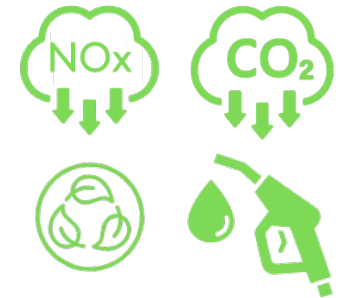
Sustainability – Made from sustainable and renewable raw materials, HVO reduces carbon emissions by as much as 90%. This enables households and businesses to make an immediate reduction in carbon emissions and reduce their environmental impact.

Improved Air Quality due to a reduction in particle and nitrogen oxide (Nox) emissions compared to diesel

Performance – Your vehicles performance will be indistinguishable from diesel with the fuel performing better under certain circumstances such as cold winter conditions

Direct Drop-In – No modifications are required to new Škoda's in order to use HVO. HVO and diesel fuel can be interchanged and mixed in any ratio or concentration.

Price – currently many fuel suppliers in Ireland are providing HVO at a comparable or equivalent price to diesel. So there is no additional cost to switching



Where can I get HVO for my Škoda?

HVO is already available at selected Certä and Circle-K outlets in Dublin, Tipperary, Carlow, Cork and Donegal with availability improving all the time.



How do I know if my Škoda is compatible with HVO?

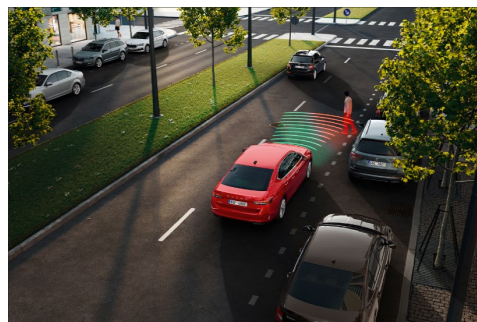
Only Škoda vehicles from "Model Year 2022" (not registration in 2022) are compatible with HVO. You can identify if your Škoda is HVO compatible by the lettering "XTL" detailed inside the fuel filler flap. If you are unsure of your vehicles model year please contact your Škoda Dealer. Biodiesel or vegetable oil should not be used in Škoda vehicles and these products should not be confused with HVO. Only HVO that meets standard EN 15940 should be used in Škoda vehicles.



ŠKODA

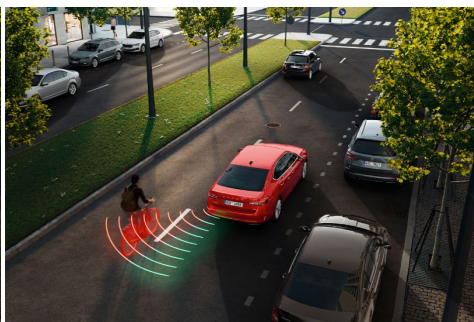
Superb Saloon: Safety Assist Systems

The Superb New Generation has been designed with safety at the forefront and has therefore been fitted as standard with industry leading safety systems providing the utmost peace of mind for both drivers and passengers. Key safety system includes:



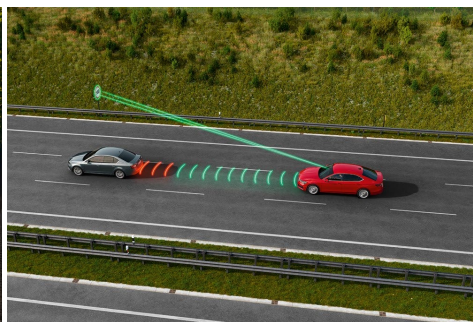
Front Assist

This system monitors the distance from the car in front and will automatically apply braking and pedestrian protection measures such as a visual collision warning or gradual braking pressure depending upon speed. The system also factors in stationary objects such as pedestrians.



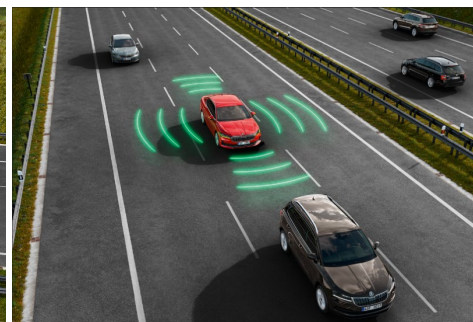
Side Assist

This system alerts drivers of approaching vehicles that are hidden in the blind spot. A warning light housed in the wing mirrors flashes to notify the driver of approaching objects.



Intelligent Speed Assist

By recognizing road signs, the driver is alerted visually and acoustically when over the speeding limit. This can be adjusted in the infotainment system.



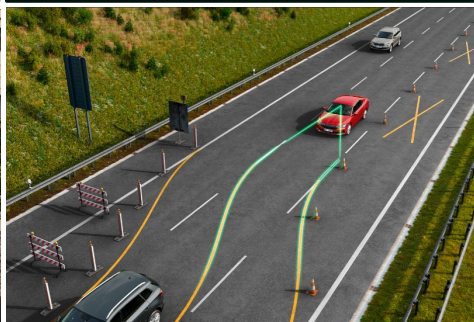
Emergency Assist

When the driver begins to show signs of inactivity, the vehicle will engage this safety feature. For example, the vehicle applies braking pressure, and the seatbelt is jerked to alarm the driver.



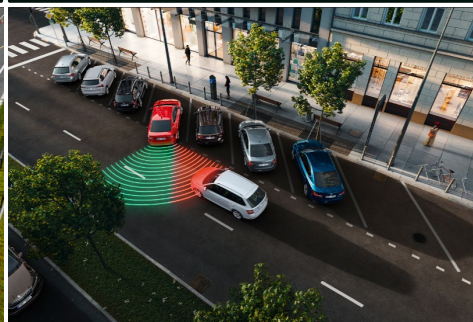
Turn Assist

When the vehicle is turning at speeds between 2-20km/h and there is another vehicle approaching from the opposite direction, automatic brakes will be activated if a predicted collision is imminent.



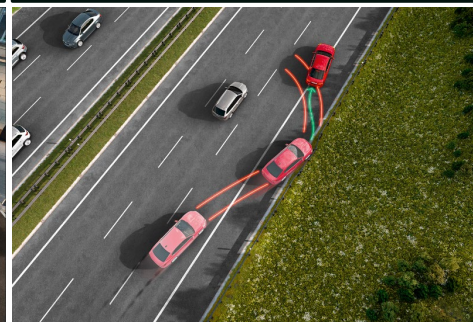
Lane Assist

This system will use automated steering to bring the vehicle back into road position if it begins to veer out of its lane. The front camera monitors the position of the vehicle within its respective lane.



Rear Cross Assist

While performing a reversing manoeuvre, the rear sensors will monitor the area behind the vehicle and if a potential danger is sensed, the automatic brakes are activated, and the vehicle is brought to a halt.



Multi Collision Brake Assist

In the event of a collision, the sensors in the vehicle will react, in turn activating the automatic braking system to prevent any further accidents.